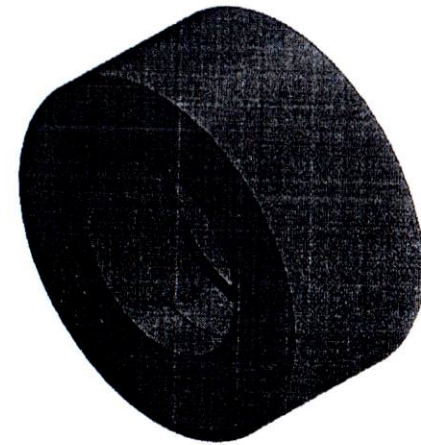


SECTION A-A



ISOMETRIC VIEW  
SCALE 1:1

\*NOTE: MASS/PART: 50 gram

\*\* INCOMING PART WILL BE CHECK. IT WILL RETURN IF NOT PASS \*\*

POLISHING	GRINDING	NORMAL MACHINING (SMOOTH SURFACE)	NORMAL MACHINING (ROUGH SURFACE)
▽▽▽	▽▽	▽	▽

1	RUBBER CAM FOLLOWER	1	RUBBER PU	90-95 SHORE A
POS	DESCRIPTION	QTY	MATERIAL	REMARKS
FILE DIR: \\192.168.4.15\mechanical\Draft Nuryana\Proyek Subrata\Rubber cam follower pallet magazine\		SCALE: 1:1		ASSY NO.
DIM: mm	NAME	DATE	MECHANICAL ENGINEERING SECTION	
DRAWN	ENDEN	11/27/2017	TITLE PALLET MAGAZINE	
DESIGN	AVAILABLE		<b>RUBBER CAM FOLLOWER</b>	
CHECK	YESSIKO			
APRV	RULLY			
CANCEL DWG NO.				
REF DWG NO.				
PT SCG LIGHTWEIGHT CONCRETE INDONESIA		A4	2012-DWG-PPL-PM-023	REV NO. PAGE
				1