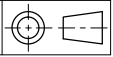


Bill of Material

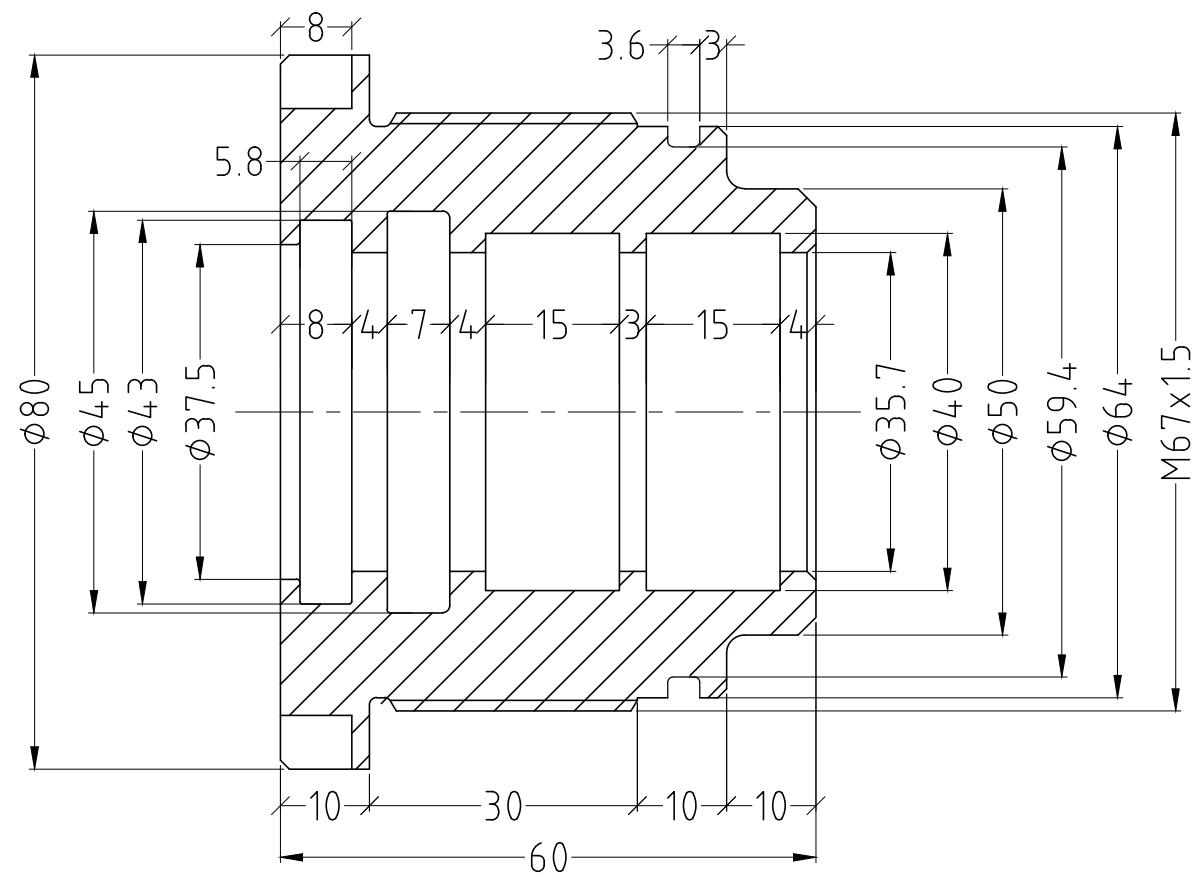
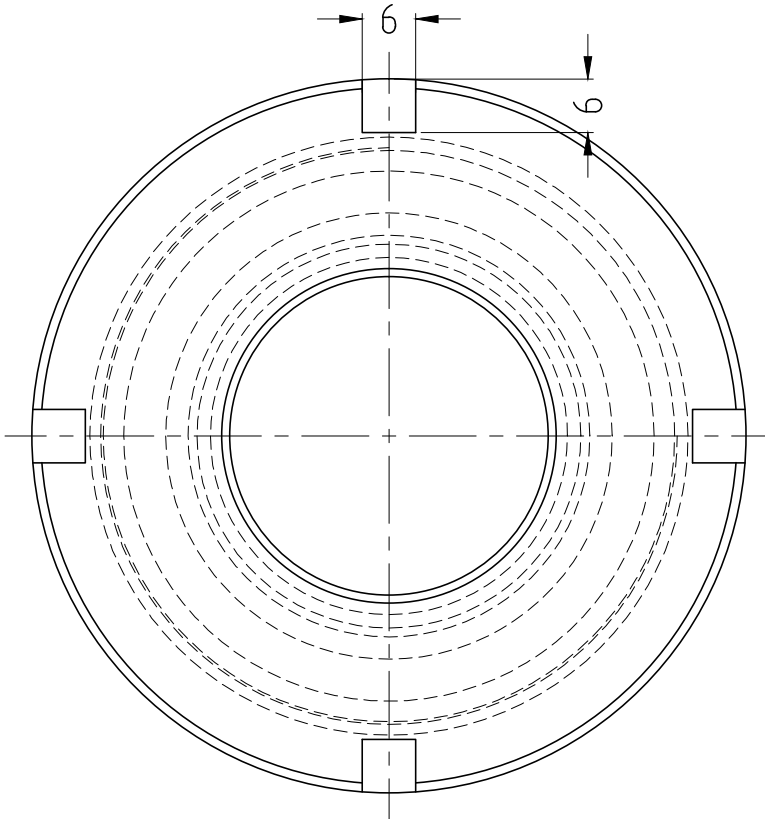
No	Description	Qty	Material
1	Front Cap	1	DWG No. 032719-63x80x35x230-1
2	Hone tube	1	DWG No. 032719-63x80x35x230-2
3	Shaft	1	DWG No. 032719-63x80x35x230-3
4	Piston	1	DWG No. 032719-63x80x35x230-4
5	Rear Cap	1	DWG No. 032719-63x80x35x230-4
6	Rear Clavis	1	DWG No. 032719-63x80x35x230-5
7	Bracket	2	DWG No. 032719-63x80x35x230-6
8	Dust seal 839N-35x43	1	PU
9	Rod seal 60IN-35x45	1	PU
10	O-ring 3 x ID.57	1	NBR
11	Guide Ring	2	PTFE
12	O-ring 2.5 x ID.20	1	NBR
13	Piston seal compact	1	HPU + NBR + POM
14	Spherical bearing GE30ES	2	STD

Revisi 1 DWG No. 032719-63x80x35x230-0

Item	Q ' ty	Title/Name, designation, material, dimension etc	Article No./Reference
Designed by	Checked by	File Name	Date
<p>PT. BESTTOFLOW SYSTEM</p>			Scale
			Customer



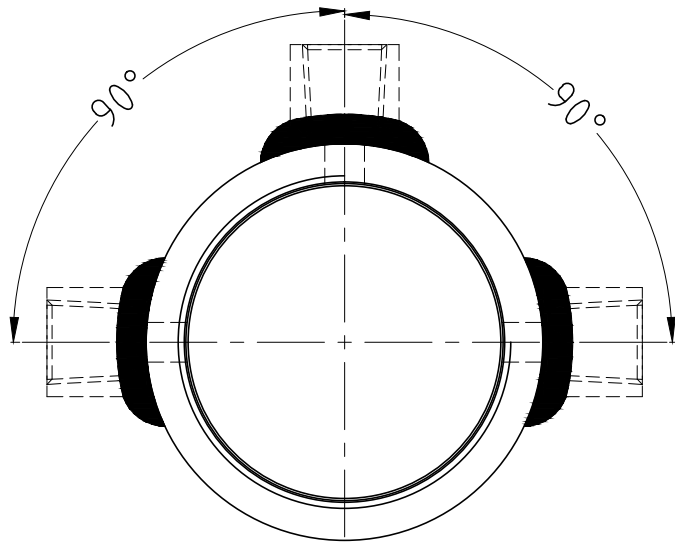
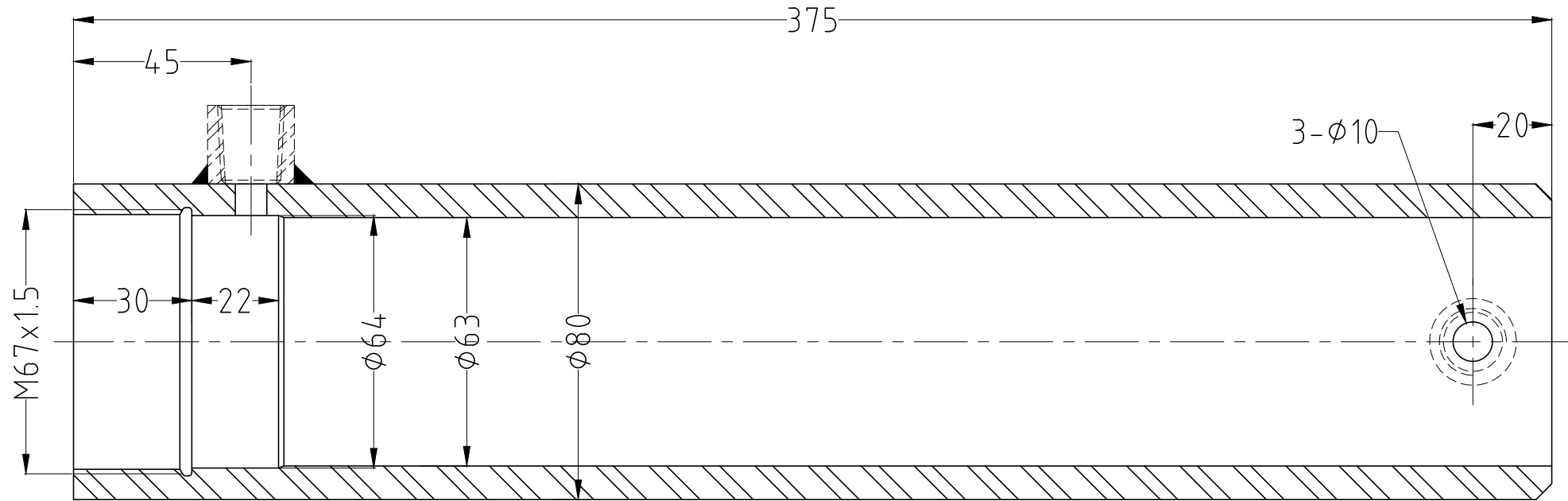
01 **Front cap**
Mat'l = S45C



DWG No. 032719-63x80x35x230-1

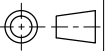
Item	Q ' ty	Title/Name, designation, material, dimension etc	Article No./Reference	
Designed by	Checked by	File Name	Date	Scale
PT. BESTTOFLOW SYSTEM		Title		
		Customer		

02 Hone Tube
Mat'l = STKM 13



DWG No. 032719-63x80x35x230-2

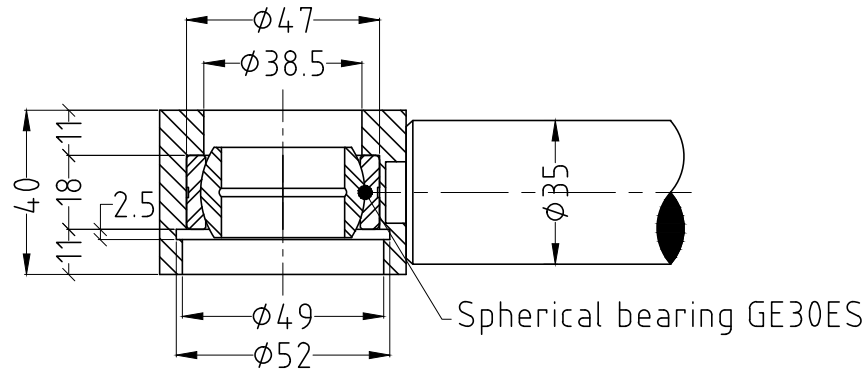
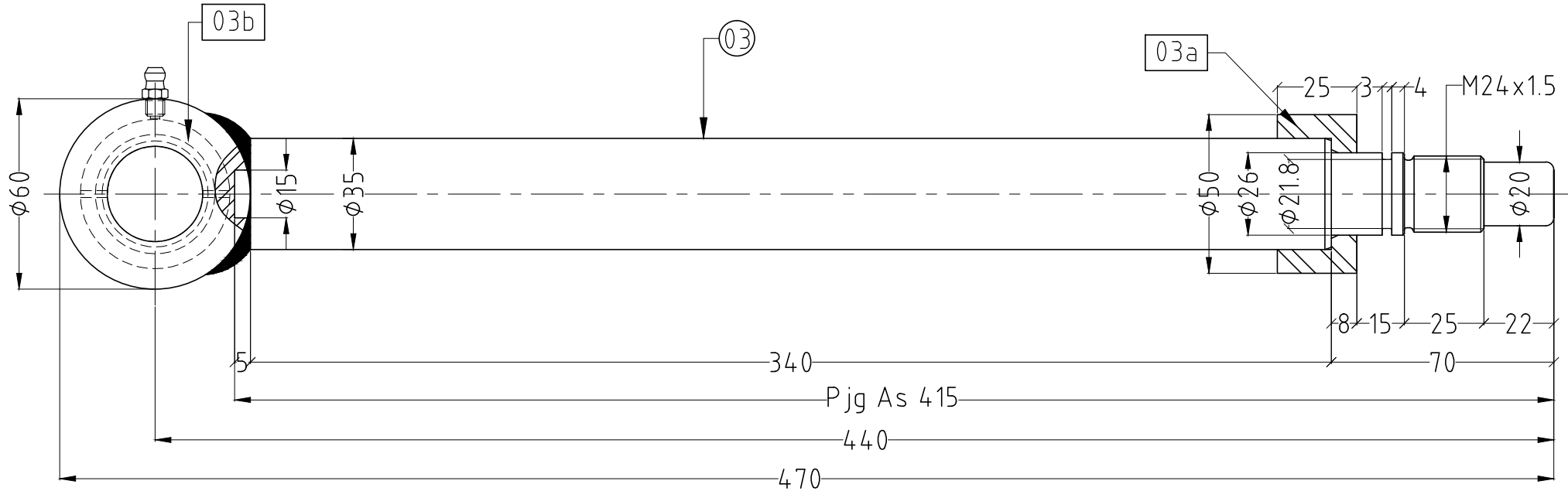
Item	Q ' ty	Title/Name, designation, material, dimension etc	Article No./Reference	
Designed by	Checked by	File Name	Date	Scale
PT. BESTTOFLOW SYSTEM			Title	
			Customer	



03 Shaft
Mat'l = S45C Chrome

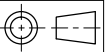
3b Front clavis
Mat'l = S45C

3a Stopper
Mat'l = S45C

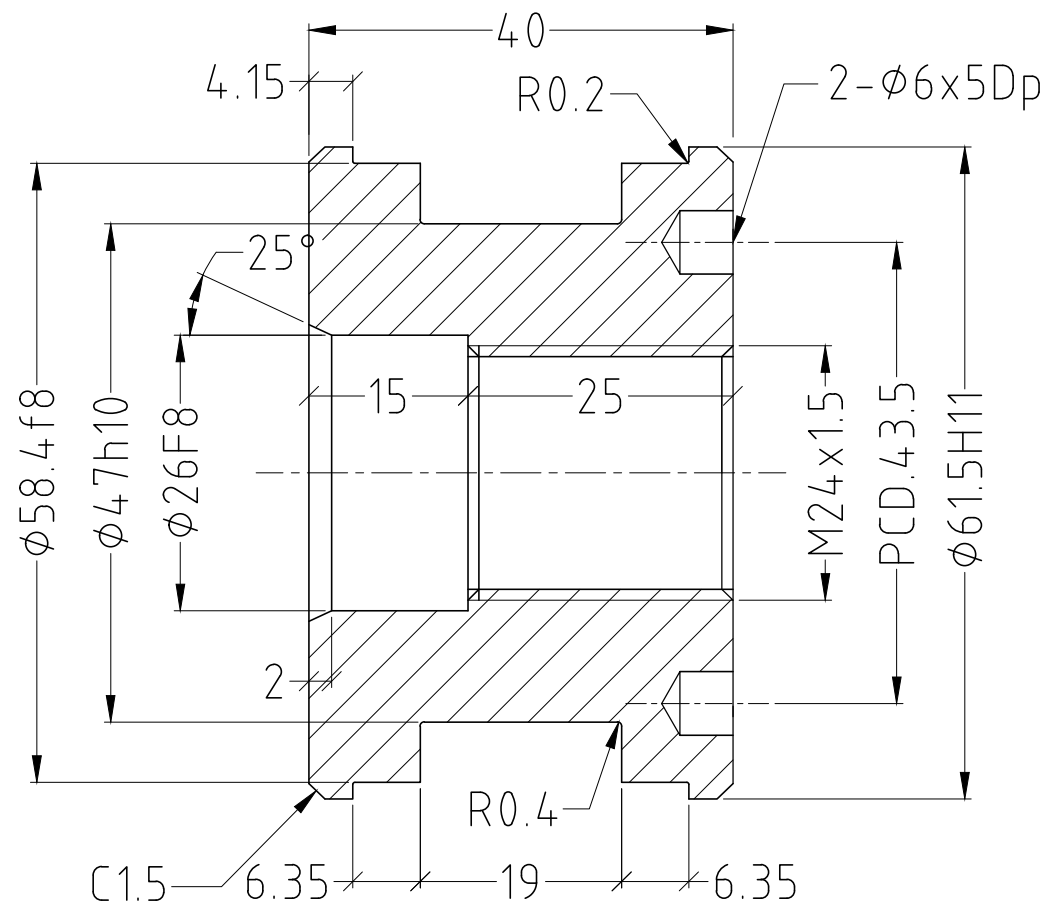


Revisi 1 DWG No. 032719-63x80x35x230-3

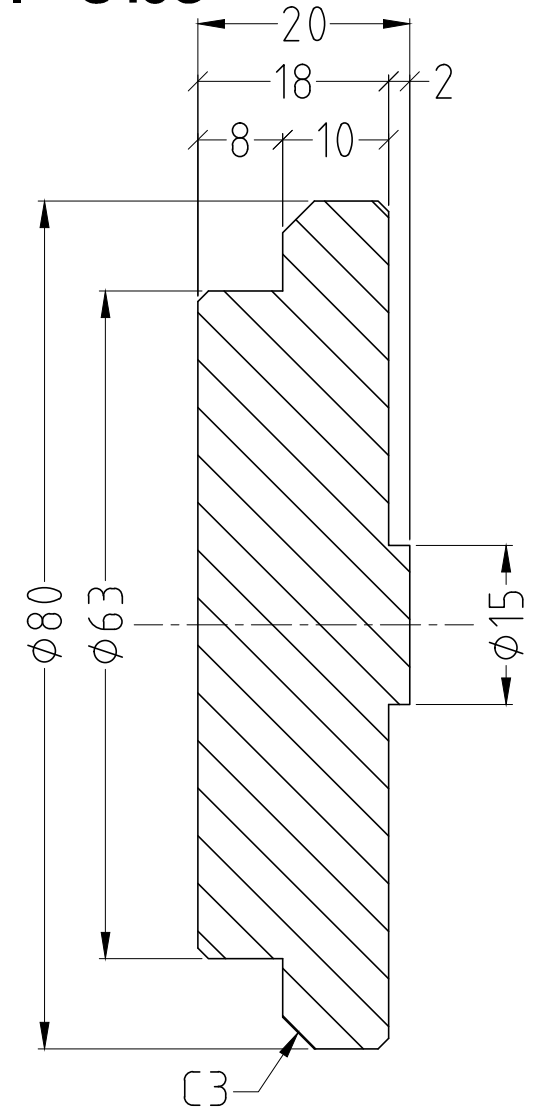
Item	Q ' ty	Title/Name, designation, material, dimension etc	Article No./Reference	
Designed by	Checked by	File Name	Date	Scale
PT. BESTTOFLOW SYSTEM			Title	
			Customer	



04 **Piston**
Mat'l = S45C

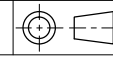


05 **Rear cap**
Mat'l = S45C



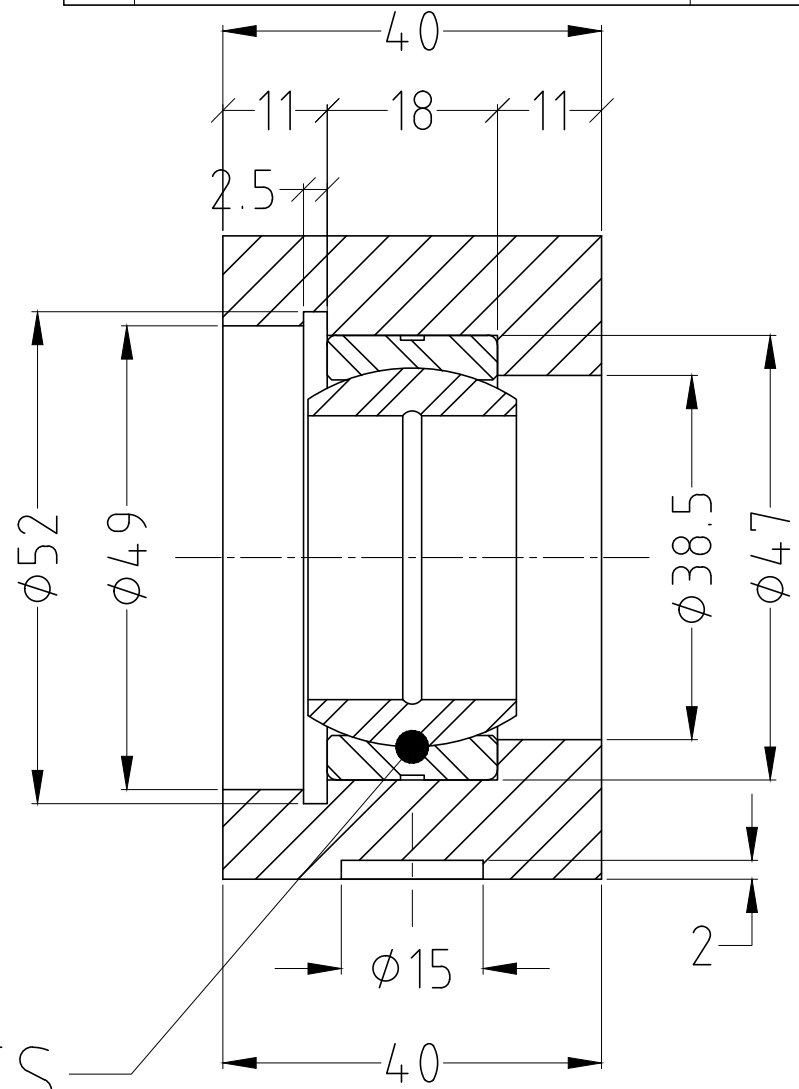
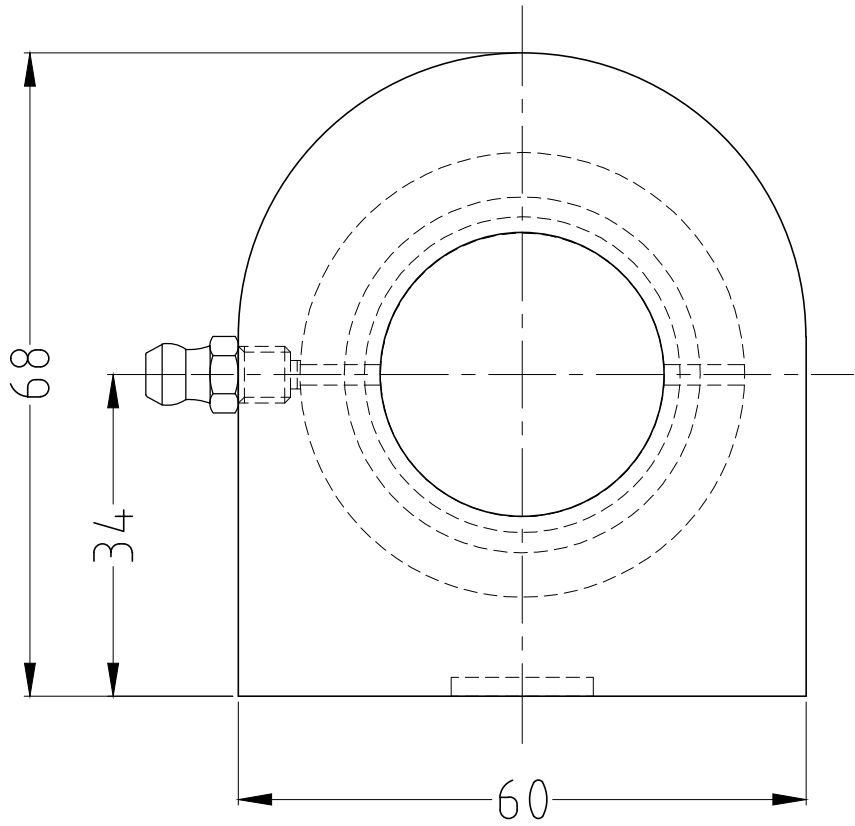
DWG No. 032719-63x80x35x230-4

Item	Q ' ty	Title/Name, designation, material, dimension etc	Article No./Reference	
Designed by	Checked by	File Name	Date	Scale
PT. BESTTOFLOW SYSTEM			Title	
			Customer	



06

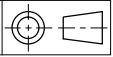
Rear Clavis
Mat'l = SS 400



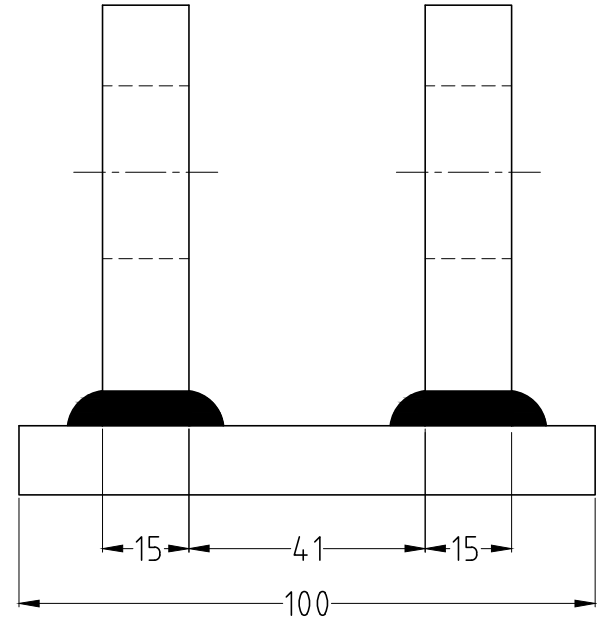
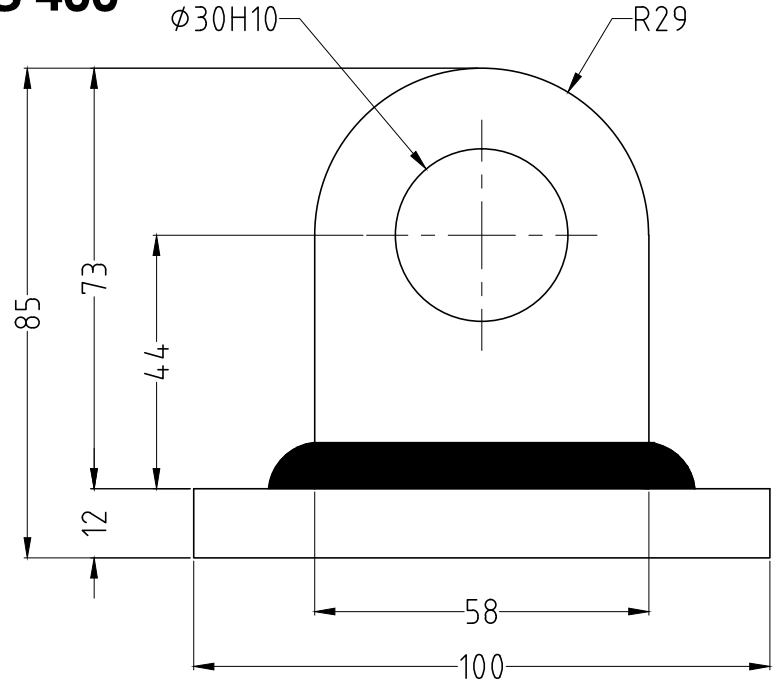
Spherical bearing GE30ES

Revisi 1 DWG No. 032719-63x80x35x230-5

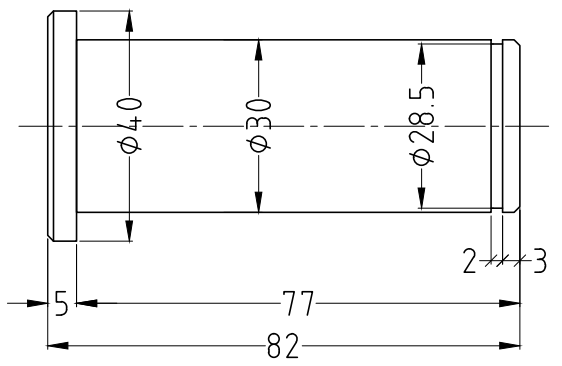
Item	Q ' ty	Title/Name, designation, material, dimension etc	Article No./Reference	
Designed by	Checked by	File Name	Date	Scale
PT. BESTTOFLOW SYSTEM			Title	
			Customer	



07 Bracket
Mat'l = SS 400



7a Pin
Mat'l = S45C



DWG No. 032719-63x80x35x230-6

Item		Q ' ty		Title/Name, designation, material, dimension etc		Article No./Reference	
Designed by		Checked by		File Name		Date	Scale
PT. BESTTOFLOW SYSTEM						Title	
						Customer	