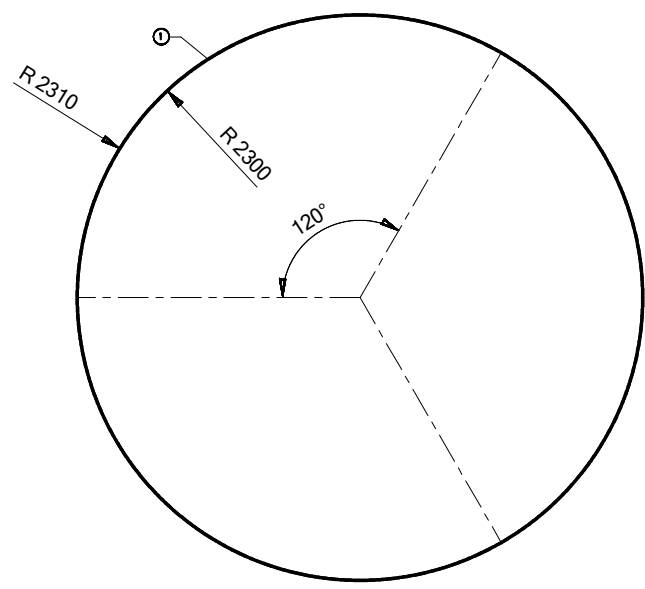
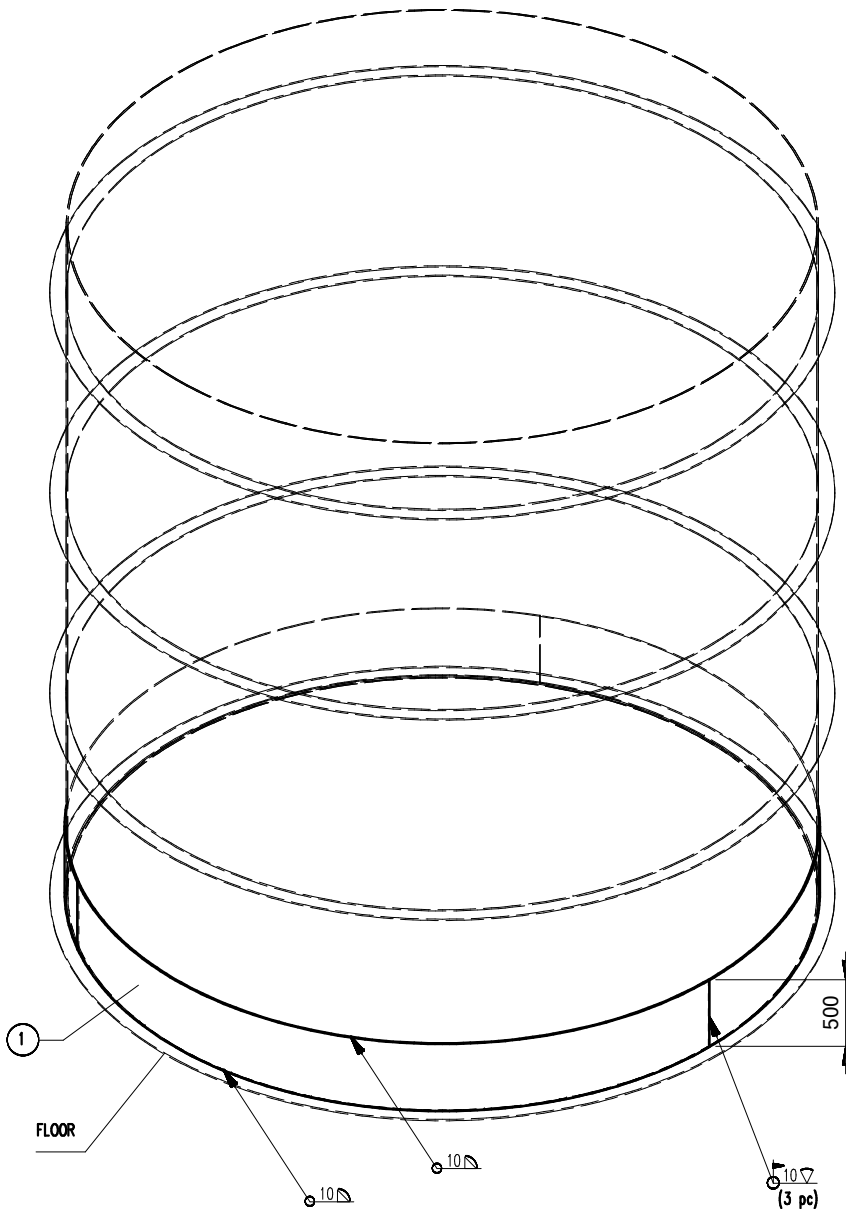
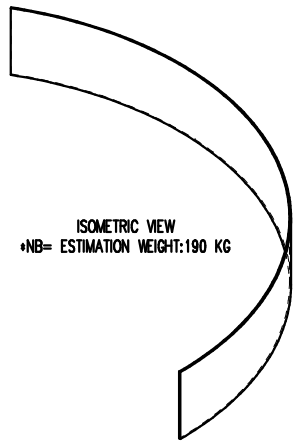


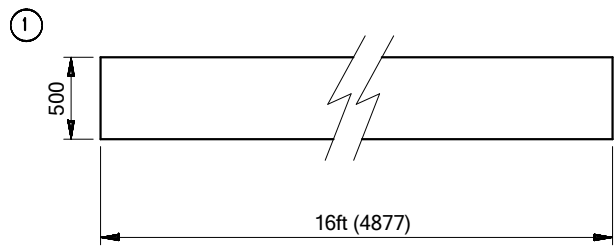
1 2 3 4 5 6



$K = 22/7 \times D$   
 $= 3,14 \times 4600\text{mm}$   
 $= 14.444\text{ mm}$   
**MAKE 3 SEGMENTED,**  
 $= 14.444/3$   
 $= 4.814 \approx 4.800\text{ mm}$



ISOMETRIC VIEW  
 \*NB= ESTIMATION WEIGHT:190 KG



**\*\* INCOMING PART WILL BE CHECK. IT WILL RETURN IF NOT PASS \*\***

POLISHING	GRINDING	NORMAL MACHINING (SMOOTH SURFACE)	NORMAL MACHINING (ROUGH SURFACE)
▽▽▽	▽▽	▽	▽

1	ADDITIONAL PART	3	SS-400 (t: 10mm)	ESTIMATION WEIGHT ±190 KG
POS	DESCRIPTION	QTY	MATERIAL	REMARKS
FILE DIR: _		SCALE: 1:45		ASSY NO.
DIM: mm		MECHANICAL ENGINEERING SECTION		
DRAWN	ENDEN	DATE	23/JUNE/20	
DESIGN	SIGIT	TITLE MIXING PLAN - SAND SLURY TANK		
CHECK	YESSIKO	ADDITIONAL PART ELDING SAND SLURY TANK		
APRV	MNUGRAHA			
[ ] = GENERAL TOLERANSI ±0.2% x DIMENSION				
REF DWG NO.				