

**SCG****PT. SCG LIGHTWEIGHT CONCRETE INDONESIA**JL. Surya Tekno KAV I-T1-3 Suryacipta City Of Industry,  
Kutamekar, Ciampel Jawa Barat 41361 Indonesia

Phone : 0267-8610361

Fax : 0267-8610360

N.P.W.P : 31.567.302.0-433.000

**PURCHASE ORDER**To : PT. S.A.N JAYA TEKNIK  
JL. SADANG NO.121  
BANDUNG 40225  
Indonesia

PO No. : 4021012806

PO Date : 30.09.2022

PO Currency : IDR

Phone : 0225424694

Fax : 0225414583

N.P.W.P : 315840538445000

Please supply the following item

No.	Material Code	Item Description	Qty	Unit	Delivery Date	Unit Price	Total Amount	Discount
10		Assy Screw Cement (see dwg)	1	PC	31.10.2022	15,000,000 / 1	15,000,000	0

Delivery To : PT SLCI  
JL. Surya Tekno KAV I-T1-3 Suryacipta City Of Industry,  
Karawang 41361 Indonesia

Total Prices 15,000,000

PPN (VAT) 1,650,000

Grand Total 16,650,000



Term of Payment : Credit 30 days after received bill

Remarks : PR 1021012427

Barang yang tidak sesuai spesifikasi akan kami kembalikan

Wajib mematuhi aturan keselamatan selama berada di PT. SLCI

2012-DWG-MPL-SC2-M-001

Prepared By	Checked By	Approved By	Confirmed By (Vendor)
 Arfandi			



# PURCHASE REQUEST CHECK APPROVAL

## ITEM DESCRIPTION

**PR Number** : 1021012427  
**Total Price** : IDR 10,500,000  
**Attachment** : [Click here \(https://iot.slsi.co.id/assets/lampiranpr/PR\\_1021012427.pdf\)](https://iot.slsi.co.id/assets/lampiranpr/PR_1021012427.pdf)

## Details PR

No.	Item	A	Material	Short Text	Quantity	Unit	Delivery Date	Plant	Matl.Group	PGR	Value
1	10	K		Assy Screw Cement (see dwg)	1	PC	04.10.2022	PT SLCI	Supplies	DBA	10,500,000

### Purpose:

[10] Screw silo lime - Mixing Area, details : 2012-DWG-MPL-SC2-M-001

GL: 523072

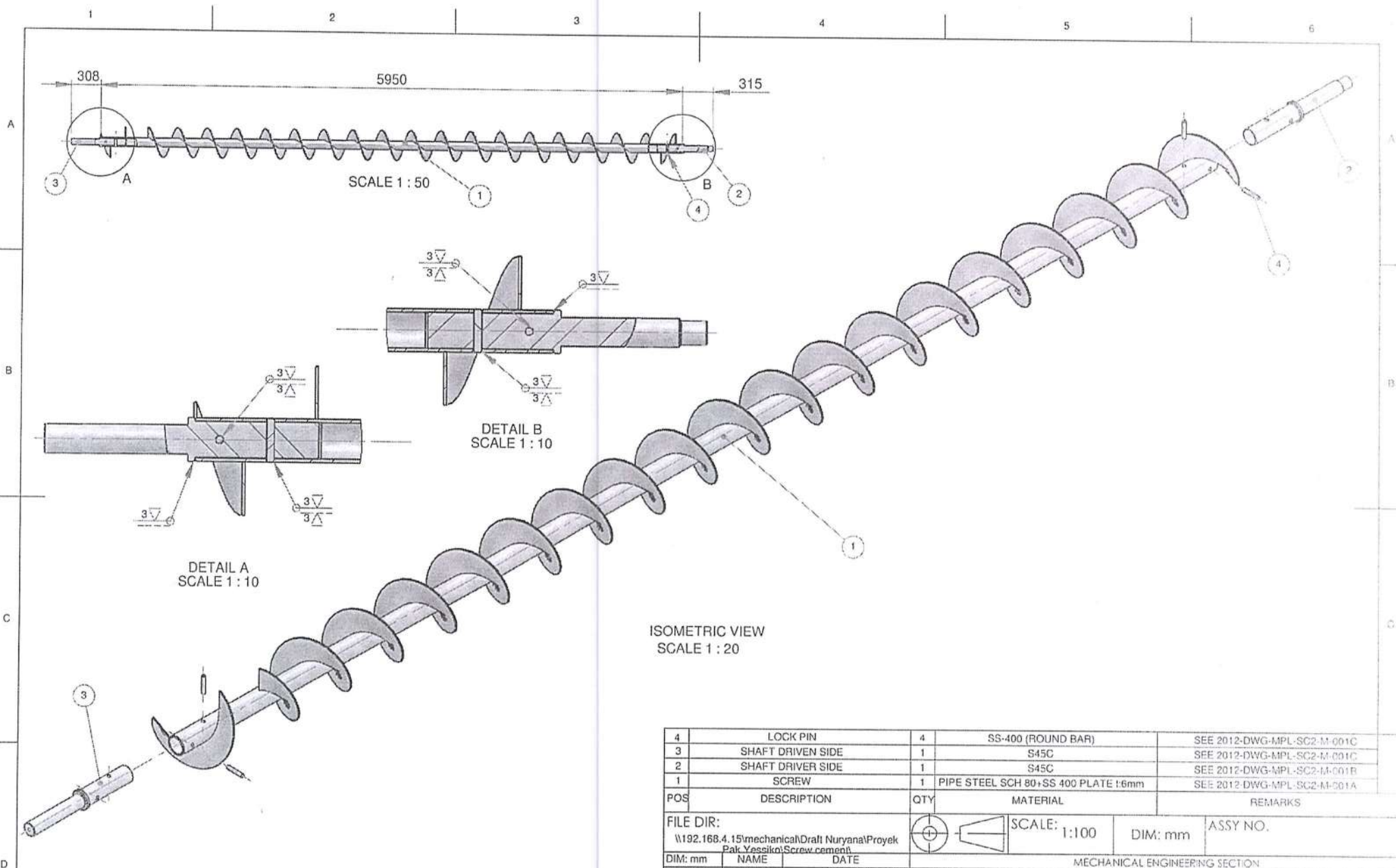
CC: 2011-10000

**Dibuat Oleh,**  
90587(Taufik Hidayat)  
2022-09-02 13:23:21

**Checked by,**  
90156(Mochamad  
Nugrahaputra)  
**Approved** at 2022-09-02  
15:58:01

**Budget Control,**  
90696(Mukhtar L)  
**Approved** at 2022-09-02  
17:04:33

**Approved by,**  
90005(Vorapong Panavasus)  
**Approved** at 2022-09-03  
07:46:48



ISOMETRIC VIEW  
SCALE 1 : 20

4	LOCK PIN	4	SS-400 (ROUND BAR)	SEE 2012-DWG-MPL-SC2-M-001C
3	SHAFT DRIVEN SIDE	1	S45C	SEE 2012-DWG-MPL-SC2-M-001C
2	SHAFT DRIVER SIDE	1	S45C	SEE 2012-DWG-MPL-SC2-M-001B
1	SCREW	1	PIPE STEEL SCH 80+SS 400 PLATE 1.6mm	SEE 2012-DWG-MPL-SC2-M-001A
POS	DESCRIPTION	QTY	MATERIAL	REMARKS

FILE DIR: \\192.168.4.15\mechanical\Draft Nuryana\Proyek Pak Yessiko\Screw cement  
 SCALE: 1:100 DIM: mm ASSY NO.

DIM: mm	NAME	DATE
DRAWN	ENDEN	03-Apr-18
DESIGN	YESSIKO	
CHECK	YESSIKO	
APRV	RULLY	
CANCEL DWG NO.		
REF DWG NO.		

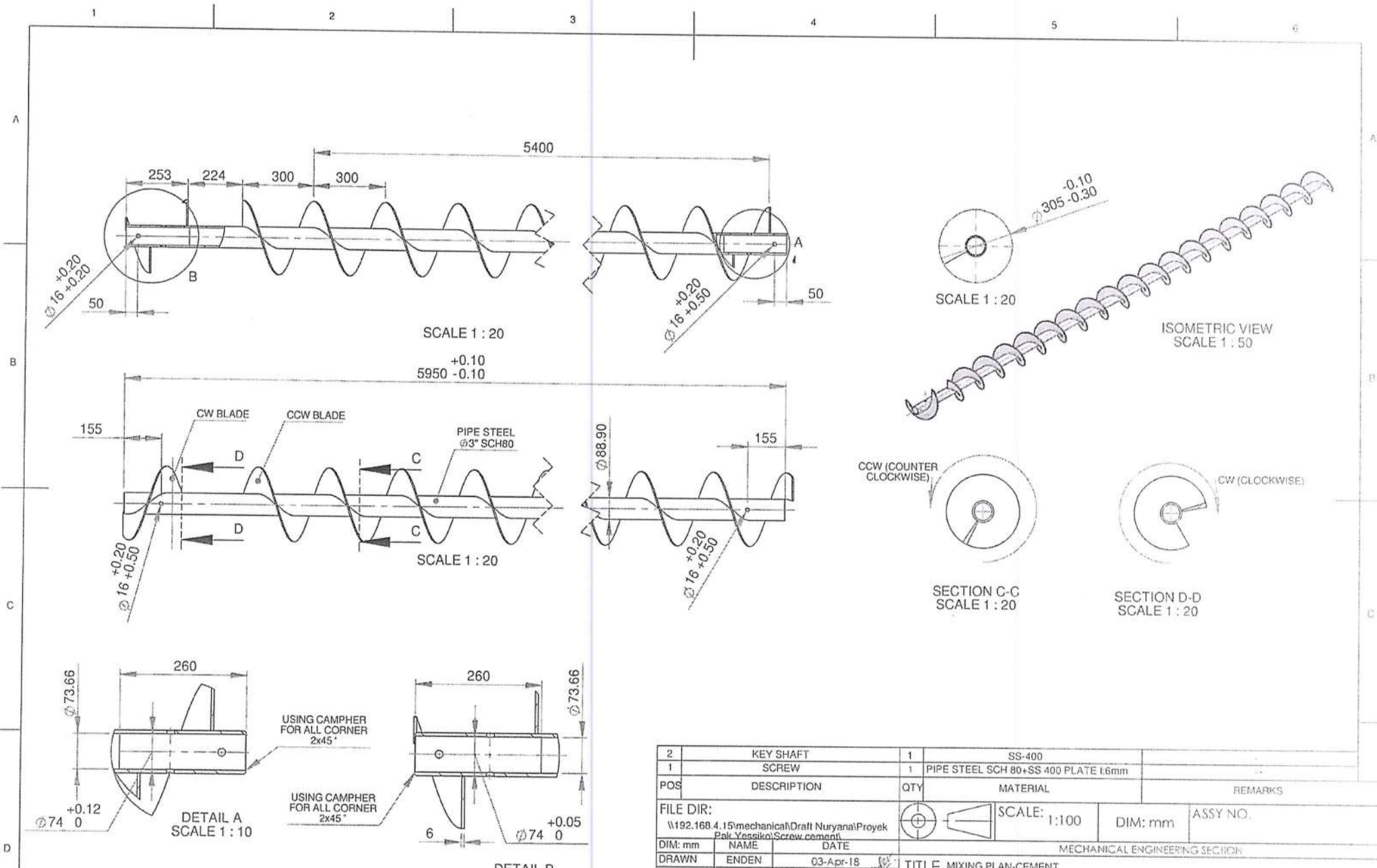
MECHANICAL ENGINEERING SECTION  
 TITLE MIXING PLAN-CEMENT

# ASSY SCREW

\*\* INCOMING PART WILL BE CHECK. IT WILL RETURN IF NOT PASS \*\*

POLISHING	GRINDING	NORMAL MACHINING (SMOOTH SURFACE)	NORMAL MACHINING (ROUGH SURFACE)
▽▽▽	▽▽	▽	▽

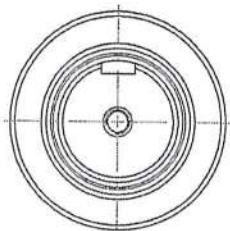




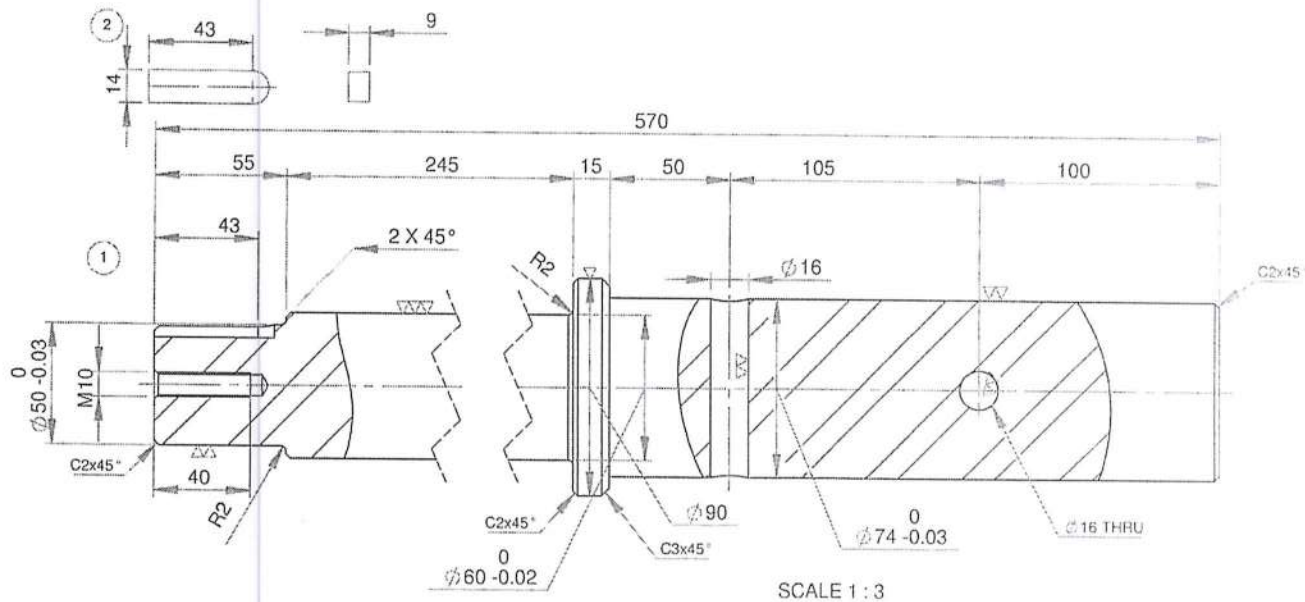
\*\* INCOMING PART WILL BE CHECK. IT WILL RETURN IF NOT PASS \*\*

POLISHING	GRINDING	NORMAL MACHINING (SMOOTH SURFACE)	NORMAL MACHINING (ROUGH SURFACE)
▽▽▽	▽▽	▽	▽

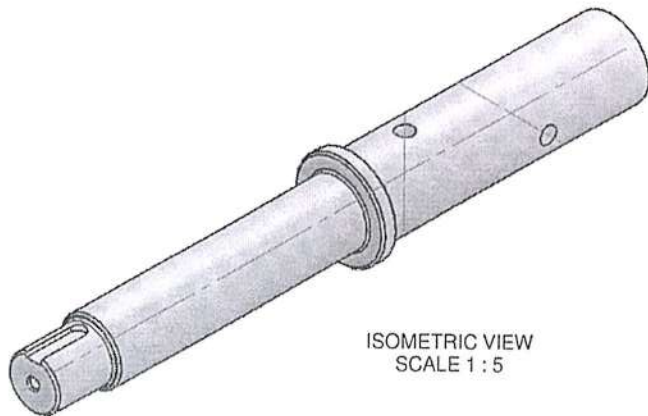
2	KEY SHAFT	1	SS-400	
1	SCREW	1	PIPE STEEL SCH 80+SS 400 PLATE L6mm	
POS	DESCRIPTION	QTY	MATERIAL	REMARKS
FILE DIR: \\192.168.4.15\mechanical\Draft Nuryana\Proyek Pak Yessiko\Screw cement			SCALE: 1:100	DIM: mm
DRAWN: ENDEN 03-Apr-18		MECHANICAL ENGINEERING SECTION		
DESIGN: YESSIKO		TITLE: MIXING PLAN-CEMENT		
CHECK: YESSIKO		<h1 style="text-align: center;">SCREW BODY</h1>		
APRV: RULLY				
CANCEL DWG NO.				
REF DWG NO.		ASSY NO.		



SCALE 1 : 3



SCALE 1 : 3



ISOMETRIC VIEW  
SCALE 1 : 5

2	KEY SHAFT	1	SS400	
1	SHAFT FIX SIDE	1	S45C	
POS	DESCRIPTION	QTY	MATERIAL	REMARKS
FILE DIR: \\192.168.4.15\mechanical\Draft Nuryana\Proyek Pak Yessiko\Screw cement			SCALE: 1:100	DIM: mm ASSY NO.
DIM: mm	NAME	DATE	MECHANICAL ENGINEERING SECTION	
DRAWN	ENDEN	03-Apr-18	TITLE MIXING PLAN-CEMENT	
DESIGN	YESSIKO			
CHECK	YESSIKO			
APRV	RULLY			
CANCEL DWG NO.				
REF DWG NO.				

## SHAFT DRIVER SIDE

\*\* INCOMING PART WILL BE CHECK. IT WILL RETURN IF NOT PASS \*\*

1		2	3

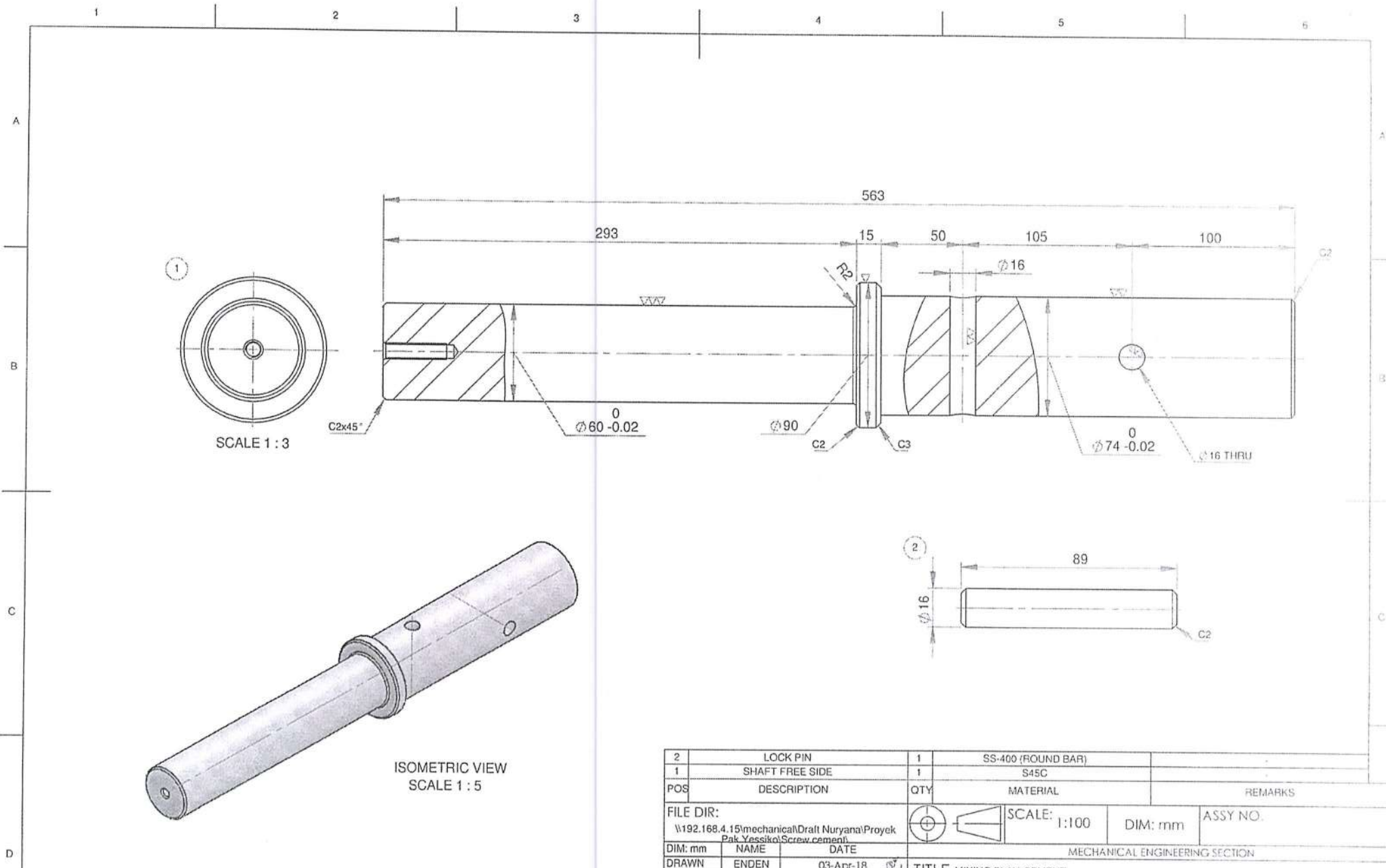


PT SCG LIGHTWEIGHT CONCRETE INDONESIA

A4 2012-DWG-MPL-SC2-M-001B

REV NO. / PAGE

3



2	LOCK PIN	1	SS-400 (ROUND BAR)	
1	SHAFT FREE SIDE	1	S45C	
POS	DESCRIPTION	QTY	MATERIAL	REMARKS
FILE DIR:		SCALE: 1:100		ASSY NO.
\\192.168.4.15\mechanical\Draft Nuryana\Proyek Pak Yessiko\Screw.cement\		DIM: mm		
DIM: mm	NAME	DATE	MECHANICAL ENGINEERING SECTION	
DRAWN	ENDEN	03-Apr-18	TITLE MIXING PLAN-CEMENT	
DESIGN	YESSIKO			
CHECK	YESSIKO			
APRV	RULLY			
CANCEL DWG NO.				
REF DWG NO.				

### SHAFT DRIVEN SIDE

\*\* INCOMING PART WILL BE CHECK. IT WILL RETURN IF NOT PASS \*\*

POLISHING	GRINDING	NORMAL MACHINING (SMOOTH SURFACE)	NORMAL MACHINING (ROUGH SURFACE)
▽▽▽	▽▽	▽	▽





**PT. S.A.N** JAYA TEKNIK  
JALAN SADRANG NO. 164 MARGAHAYU BANDUNG 40225  
Telp : (022) 5404965, 5417604  
Fax : (022) 5414583  
Email : [mandang\\_sanjaya184@yahoo.com](mailto:mandang_sanjaya184@yahoo.com)  
Website : [www.sanjayateknik.com](http://www.sanjayateknik.com)  
Mobile : 0813 210909 08  
0878 210909 19

**SPH**  
**SURAT PENAWARAN HARGA**

No SPH : 023 SPH/SJT/IX/2022  
Tanggal : 10 - 09 - 2022

**A. Biodata Workshop**  
**PT. S.A.N Jaya Teknik**  
Jl. Sadang No. 164 Margahayu Bandung 40225  
Telp : (022) 5404965, 5417604  
Fax : (022) 5414583  
Email : [mandang\\_sanjaya184@yahoo.com](mailto:mandang_sanjaya184@yahoo.com)  
Website : [www.sanjayateknik.com](http://www.sanjayateknik.com)  
Mobile : 0813 210909 08  
0878 210909 19

**B. Biodata Customer**  
Kepada Yth  
Nama Perusahaan : **PT. SCG Lightweight Concrete Ind.**  
Alamat : Surya Cipta City of Industry  
Karawang - Indonesia  
Telp. : (0267) 8610 362, 8610 363  
Fax : (0267) 8610 360  
Email : [arfandikurn@scg.com](mailto:arfandikurn@scg.com)  
Person : **Bpk. Arfandi**

Dengan Hormat,  
Berikut ini kami sampaikan penawaran harga untuk barang berikut dibawah ini :

**C. Biodata Pekerjaan**

Jenis Pekerjaan :  Manufaktur  Fabrikasi  Repair  Modifikasi  
Sub Bidang :  Part/Komponen  Sub Assy  Complete Assy

No.	Nama Barang	Qty	Sat	Harga Satuan (Rp)	Jumlah Harga (Rp)
1.	<b>SCREW ASSY</b> 1. Screw Body 2. Shaft Driver 3. Shaft Driven	1	Set	15.000.000 <del>18.000.000</del> confirmed by Pak Nandang 12/9	18.000.000
				<b>Jumlah</b>	18.000.000
<i>Terbilang : Sembilan belas juta sembilan ratus delapan puluh ribu rupiah</i>				<b>PPN 11%</b>	1.980.000
				<b>Total</b>	19.980.000

**Spesifikasi/Dimensi/Keterangan**

**Dimensi :**  
- Screw = 305 x 5950  
- Driver Shaft = Ø50 x 570  
- Driven Shaft = Ø60 x 563  
**Material :**  
- Blade = Plat 6mm, Pipa = O3" SCH 80  
- Driver/Driven Shaft = S45C

**Ruang Lingkup kerja Umum (RLKU)**

- Inspeksi Awal,
- Diskusi Teknik,
- Pengadaan material,
- Proses Produksi

**Ruang Lingkup Kerja Produksi (RLKP)**

- Laser Cutting
- Turning
- Setting
- Balancing

**D. Sketsa / Catatan**

1. TOLERANSI DIMENSI DAN GEOMETRIS SESUAI DENGAN STANDARD ISO
2. PT. Sanjaya Teknik akan mengajukan addendum harga apabila ada pekerjaan diluar ruang lingkup pekerjaan diatas

Demikian surat penawaran harga ini kami sampaikan, dan kami tunggu kabar baik selanjutnya. Atas perhatian, kepercayaan dan kerjasamanya yang baik selama ini, kami ucapkan terima kasih.

**E. Ketentuan**

Proses Kerja :  
Pembayaran :  
Down Payment (DP):  
Validasi Penawaran : 1 Minggu  
Keterangan : Pekerjaan setelah DP, PO/SPK diterima

Dibuat Oleh,  
  
  
(Gittha Yulika)

Diketahui Oleh,  
  
(Nandang Sophian)



# KALOPER

## PT. Kajian Logam Persada



Head Office: Jl. Pahlawan Revolusi No. 22E - 22F Pondok Bambu - Jakarta 13430 - Indonesia  
Telp. (021) 8613350, 8618991 Fax : (021) 8613349  
Factory : Jl. Narogong KM 12,5, Bekasi, Telp. (021) 82610162, Fax. (021) 82603364  
E-mail : [kaloper@cbn.net.id](mailto:kaloper@cbn.net.id)  
Website : [www.kaloper-industry.com](http://www.kaloper-industry.com)  
Bank : Bank Mandiri Cab. MT. Haryono - Jakarta

Jakarta, 28 September 2022

No: L- 001/KLP.WS/IX/22  
KepadaYth .  
PT. SCG Lightweight Concrete Indonesia  
Jl. Surya Tekno Kav I T1-3 Surya Cipta  
Karawang Barat

Up. Bapak Arfandi Kurniawan

### Subject: Harga Fabrikasi 1 Unit Screw

Dengan hormat,  
Melanjutkan komunikasi permintaan harga untuk pekerjaan " Fabrikasi 1 Unit Screw" berikut kami sampaikan sbb:

No	Description	Qty	Harga/Unit	Total Harga
1	Fabrikasi Screw Plate t : 6mm SS 400 Include balancing	1	Rp. 23.000.000,-	Rp. 23.000.000,-
			PPN 11 %	Rp. 2.530.000,-
			Subtotal	Rp. 25.530.000,-
Terbilang : Dua Puluh Lima Juta Lima Ratus Tiga Puluh Ribu Rupiah				

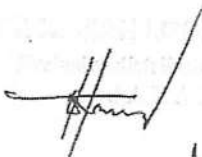
*price nete confirmed by Bu Henny 29/9*

Syarat Penawaran :

- Harga termasuk PPN 11%
- Lama Pekerjaan : 30 Hari setelah PO diterima
- Pembayaran : 100% selama 30 hari setelah Invoice dan barang diterima

Demikian penawaran ini kami sampaikan, dan menunggu konfirmasi PO dari Bapak, kami ucapkan terima kasih

Hormat kami,

  
**Ir. Titus Purba**  
Direktur



# PT. CIPTA PRESISI MANDIRI

PART SPECIALIST, DIES, GEAR, GENERAL CONTRACTOR & ENGINEERING SERVICE

Komplek Pergudangan Kamal Indah

BLOK E no.8 Kamal - Kalideres, Jakarta Barat

Telp. : (021) 2255 7468, 5595 9153 Fax. (021) 5595 9153

Mobile : 0812 1978 1011

E-mail : cpmindonesia@yahoo.co.id

Jakarta 10 September 2022

Nomor : 373/CPM/IX/22/SLCI/032

Hal : Penawaran Harga

Kepada :

PT. SCG Lightweight Concrete Indonesia

Jl.Surya Tekno Kav. I-T1-3 Surya Cipta

Karawang, Jawa Barat 41361

Up. Bp. Yoki Radiansyah

Telp. (0267) 8610362

Dengan hormat,

Bersama ini kami sampaikan penawaran harga untuk pembuatan part standard sesuai dengan gambar yang kami terima, adalah sebagai berikut:

No.	Part Name	Dwg No	Mtrl	Qty	Harga	Jumlah
1	Assy Screw	2012-DWG-MPL-SC2-M-001	See Dwg	1 Unt	<del>32,500,000</del>	Rp 32,500,000
TOTAL						Rp 32,500,000

\* Harga diatas belum termasuk PPN 11 %

**Keterangan:**

- Delivery : ± 4 - 6 Minggu setelah PO diterima
- Pembayaran : 2 Minggu setelah barang diterima
- Penawaran ini berlaku selama 1 minggu

Demikian surat penawaran ini kami buat. Atas perhatian dan kerjasamanya kami ucapkan terima kasih.

Hormat kami,



Farizal

disc. 10%

29.250.000

Confirmed by

Pak Farizal 12/9.