

Display Purchase Req. 1021011746

Document Overview On Personal Setting

2010 PR frm MRP/CBP

Header

Default Values

Requisn Date St..	Item	A	I	M	Short Text	Quantity	Unit	Delivery Date	P...	Requisitioner	Matl Group	Plant	Stor. Loc.	Purch. Grp	Total Value
10.03.2022	10	K			Roller guide (see dwg)	4	ST	29.03.2022	1	Taufik	Supplies	PT SLCI		DBA	3,800,000

Item

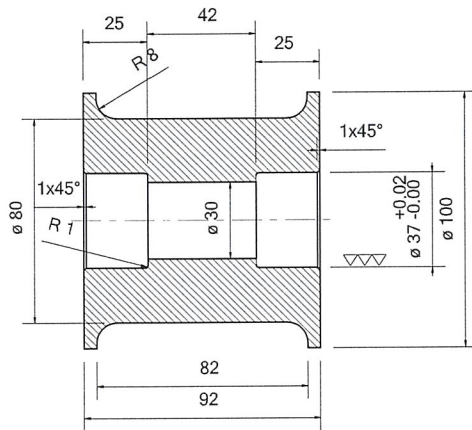
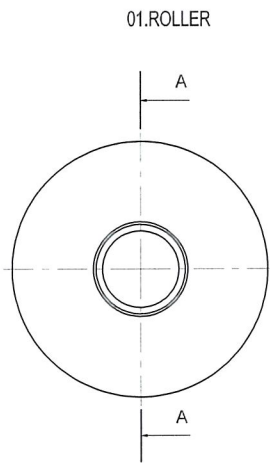
Material Data | Quantities/Dates | Valuation | Account Assignment | Source of Supply | Status | Contact Person | Texts | Delivery Address | Spec2000 / SC

- Item Texts
- Item text
- Item note
- Delivery text
- Material PO text

A... Purpose :
 Replace roller guide of cake divider crane, existing part already worn out. Installed since March 2021.

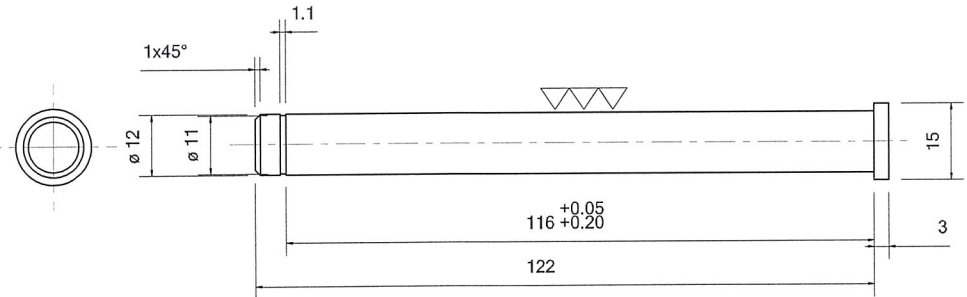
 Details drawing : 2012-DWG-MCA-ACD-M-001-B-5

 GL : 523072
 CC : 2011-10000

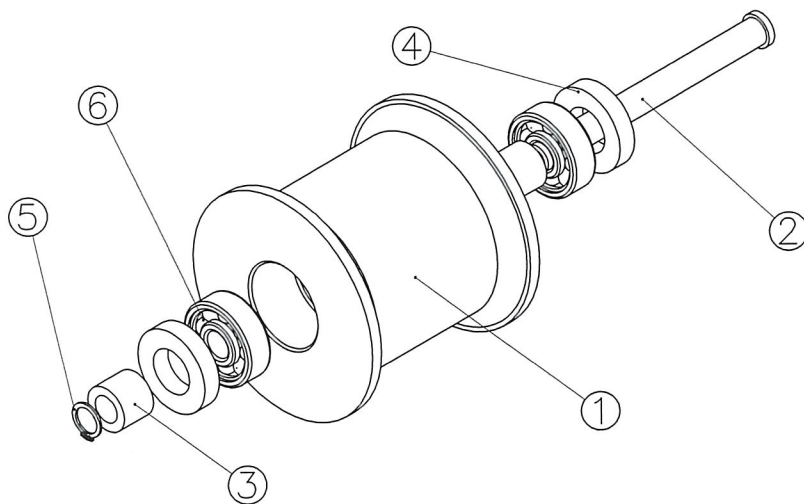
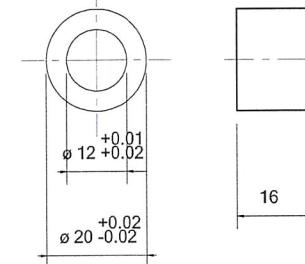


SECTION A-A

02.SHAFT



03.SPACER
SCALE 1 : 2



** INCOMING PART WILL BE CHECK. IT WILL RETURN IF NOT PASS **

POLISHING	GRINDING	NORMAL MACHINING (SMOOTH SURFACE)	NORMAL MACHINING (ROUGH SURFACE)
▽▽▽	▽▽	▽	▽

6	Bearing 6301 2Z	2	SKF		
5	External snapping ø12mm	1	Standard		
4	OIL SEAL 20 37 8	2	NBR		
3	Spacer	2	SS400		
2	Shaft	1	VCN 150		
1	Roller	1	Nylon		
POS	DESCRIPTION	QTY	MATERIAL	REMARKS	
FILE DIR:		SCALE: 1:55	DIM: mm	ASSY NO.	
MECHANICAL ENGINEERING SECTION					
DIM: mm	NAME	DATE	TITLE ARM CAKE DIVIDER		
DRAWN	SIGIT	27/02/2019			
DESIGN	SIGIT				
CHECK	YESSIKO				
APRV	NUGI				
CANCEL DWG NO.			GUIDE ROLLER		
REF DWG NO.					
PT SCG LIGHTWEIGHT CONCRETE INDONESIA		A4	2012-DWG-MCA-ACD-M-001-B-5	REV NO.	PAGE 2.5