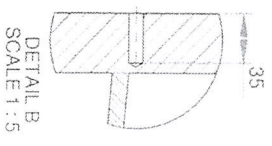
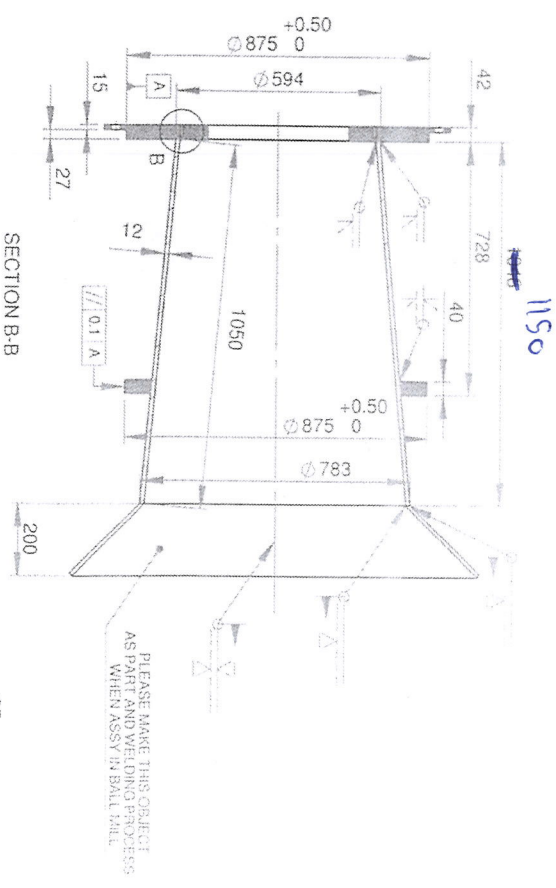
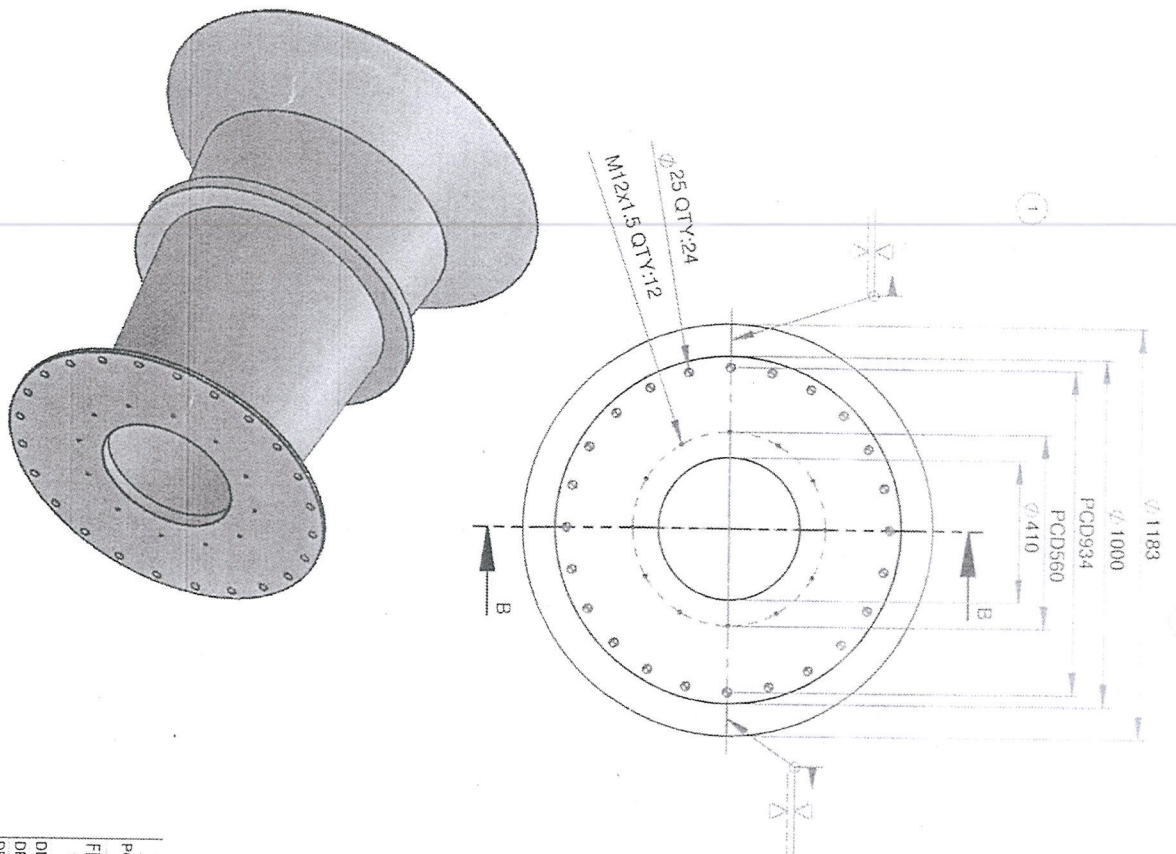


SCOPE PEMERIKSAAN :  
 - DOUBLING PLATE  
 - TRUNNION DIBELAH MENJADI 3 BAGIAN (MAREKA AKSES TERBATAS)



\*\* INCOMING PART WILL BE CHECK. IT WILL RETURN IF NOT PASS \*\*

POLISHING GRINDING NORMAL MACHINING (SMOOTH SURFACE) NORMAL MACHINING (ROUGH SURFACE)

POS	TRUNNION	DESCRIPTION	QTY	WEAR PLATE HARDX	MATERIAL	SCALE	DIM: mm	ASSY NO.	REMARKS
1	1	TRUNNION	1	3%	3%	1:20	mm		

FILE DIR: V:\192-158-4-15\mechanical\Draw\Nuryana\Proyek Pak gawat\Ball Mill\Trunnion Ball Mill

DRAWN: ENDEN NAME: 7/27/2017 DATE: *Enden*

CHECK: YES/IKO

APPRV: FULLY

CANCEL DWG NO.

REF. DWG NO.

TITLE: TRUNNION

MECHANICAL ENGINEERING SECTION

PT SCG LIGHTWEIGHT CONCRETE INDONESIA

A4 2012-DWG-RMA-BM-M-050 A

REVNO. PAGE